



PROVEN TO PREVENT THE SPREAD OF FLAMES



CONTENTS

02

LP® FLAMEBLOCK®
FIRE-RATED SHEATHING
OVERVIEW

04

USES AND TECHNICAL
INFORMATION

05

PROPERTIES

06

ROOF DECK
APPLICATIONS

07

SINGLE-FAMILY WALL
ASSEMBLIES

08

TOWNHOUSE
SEPARATION WALL
ASSEMBLIES

09

TYPE I & II
CONSTRUCTION
EXTERIOR WALL
SYSTEMS

10

TYPE III
CONSTRUCTION
EXTERIOR WALL
ASSEMBLIES

13

TYPE V
CONSTRUCTION
EXTERIOR WALL
ASSEMBLIES

17

WOOD STUD
ASSEMBLIES

21

STEEL STUD
ASSEMBLIES

LP FlameBlock®

PROVEN TO SLOW DOWN THE SPREAD OF FLAMES.

When it comes to defending your build from fire, LP® FlameBlock® Fire-Rated Sheathing combines proven flame-spread and burn-through resistance in one panel. Designed for wall and roof deck applications, each panel is coated with LP's proprietary Pyrotite® layer. Plus, it delivers exceptional strength and integrity to give you greater design flexibility on every build.



LP FlameBlock®
FIRE-RATED SHEATHING



LP® FLAMEBLOCK® FIRE-RATED SHEATHING



Innovative Design: Made with LP's proprietary non-combustible, fiberglass-reinforced Pyrotite® coating bonded to the board on one or both sides.

Backed by LP: As with all of our products you'll be backed by LP, one of the biggest names in the industry serving customers nationwide since 1973. Choose LP FlameBlock Fire-Rated Sheathing for your next project.



MEET CODE. EXCEED EXPECTATIONS.®

LP® FlameBlock® Fire-Rated Sheathing is evaluated to meet code requirements for fire-resistant construction as a component of 1-hour and 2-hour wall assemblies and in roof deck applications.

LP FLAMEBLOCK APPLICATIONS

- Evaluated by ICC-ES ([ESR-1365](#), [ESL-1002](#), [PMG-1089](#))
- UL and Intertek fire-resistant rated wall assemblies tested in accordance with ASTM E119
- Evaluated to the performance requirements of IBC Section 2303.2 (Fire-retardant treated wood)
- Component of fire-resistance-rated construction (2021 IBC Section 703)
- Wall sheathing for exterior walls of Type III construction with a two-hour rating or less; 2-Sided FlameBlock Sheathing required
- Exterior walls and roof sheathing on buildings of Type I or II construction (2021 IBC section 603. 1); 2-Sided FlameBlock Sheathing required
- Roof sheathing on building of Type II, IV, V and residential construction for a distance of 4 feet on both sides of a fire wall (2021 IBC Section 706.6, exception 4.3 and 2018 IRC Section R302.2.4 exception)
- Class A interior finish material for walls and ceilings of Type V construction (2021 IBC Section 803); Pyrotite coating facing the interior of the building
- Component of fire-classified roof covering assemblies (2021 IBC Section 1505.1)
- Thermal barrier of separating foam plastic insulation from the interior of a building (2021 IBC Section 2603.4); Pyrotite coating facing the interior of the building



Look beneath the ignition-resistant Pyrotite® coating and you'll find the strength of LP® OSB.

LP® FlameBlock® Fire-Rated Sheathing features a proprietary non-combustible, fiberglass-reinforced Pyrotite® treatment.

DESIGN STRENGTH AND FLEXIBILITY

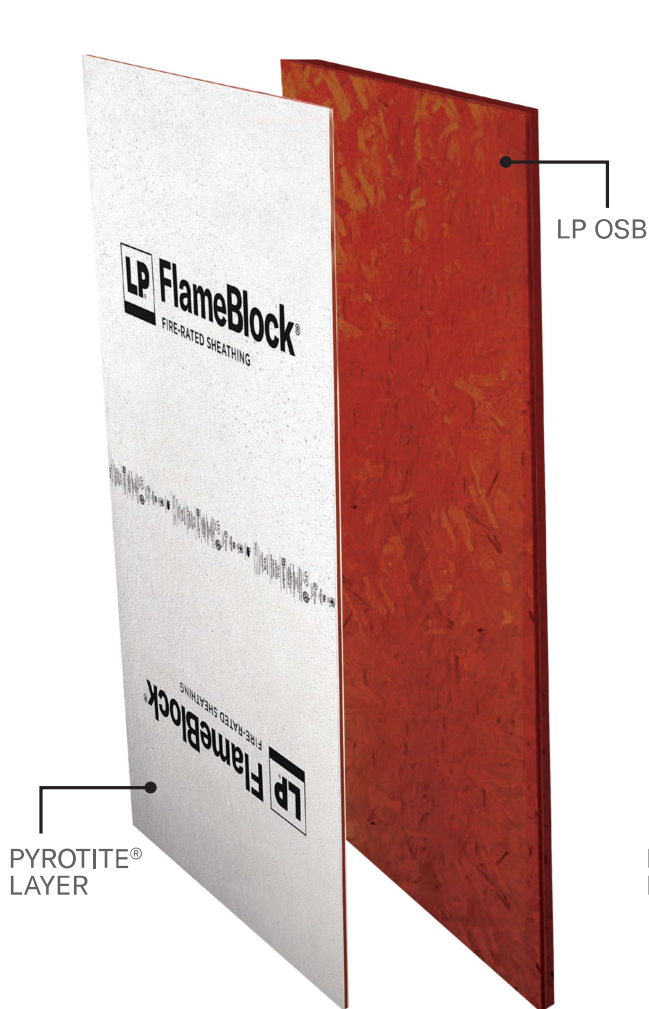
LP FlameBlock panels carry load/span and shear design values equivalent to an untreated wood structural panel of the same thickness evaluated in accordance with US DOC PS 1 and PS 2. Using LP FlameBlock sheathing provides design flexibility by combining structural capacity and fire resistance in a single panel. It may eliminate a layer of gypsum to simplify and expedite the construction process.

EXPOSURE 1

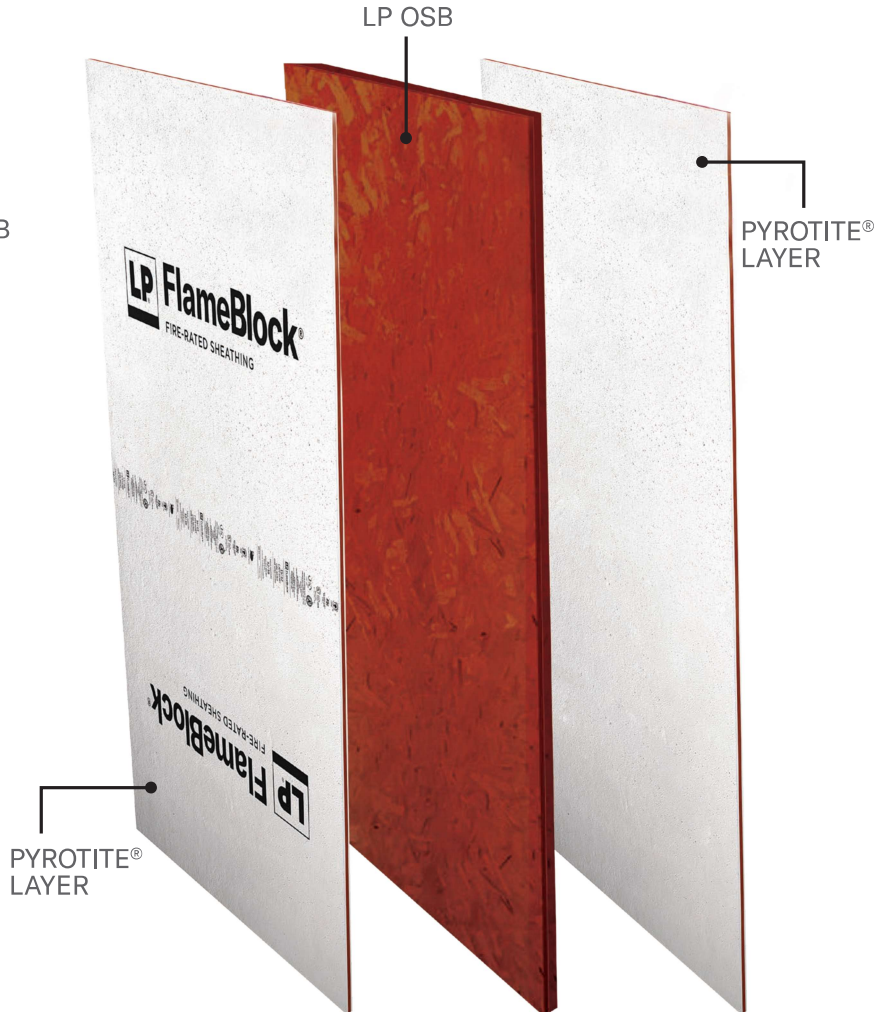
Exposure 1 classification signifies that LP FlameBlock sheathing is intended to resist the effects of moisture on structural performance during active construction. The fire resistance of LP FlameBlock sheathing is not impacted by exposure to moisture during construction.

LP® FLAMEBLOCK® PROPERTIES

1-SIDED LP FLAMEBLOCK SHEATHING



2-SIDED LP FLAMEBLOCK SHEATHING



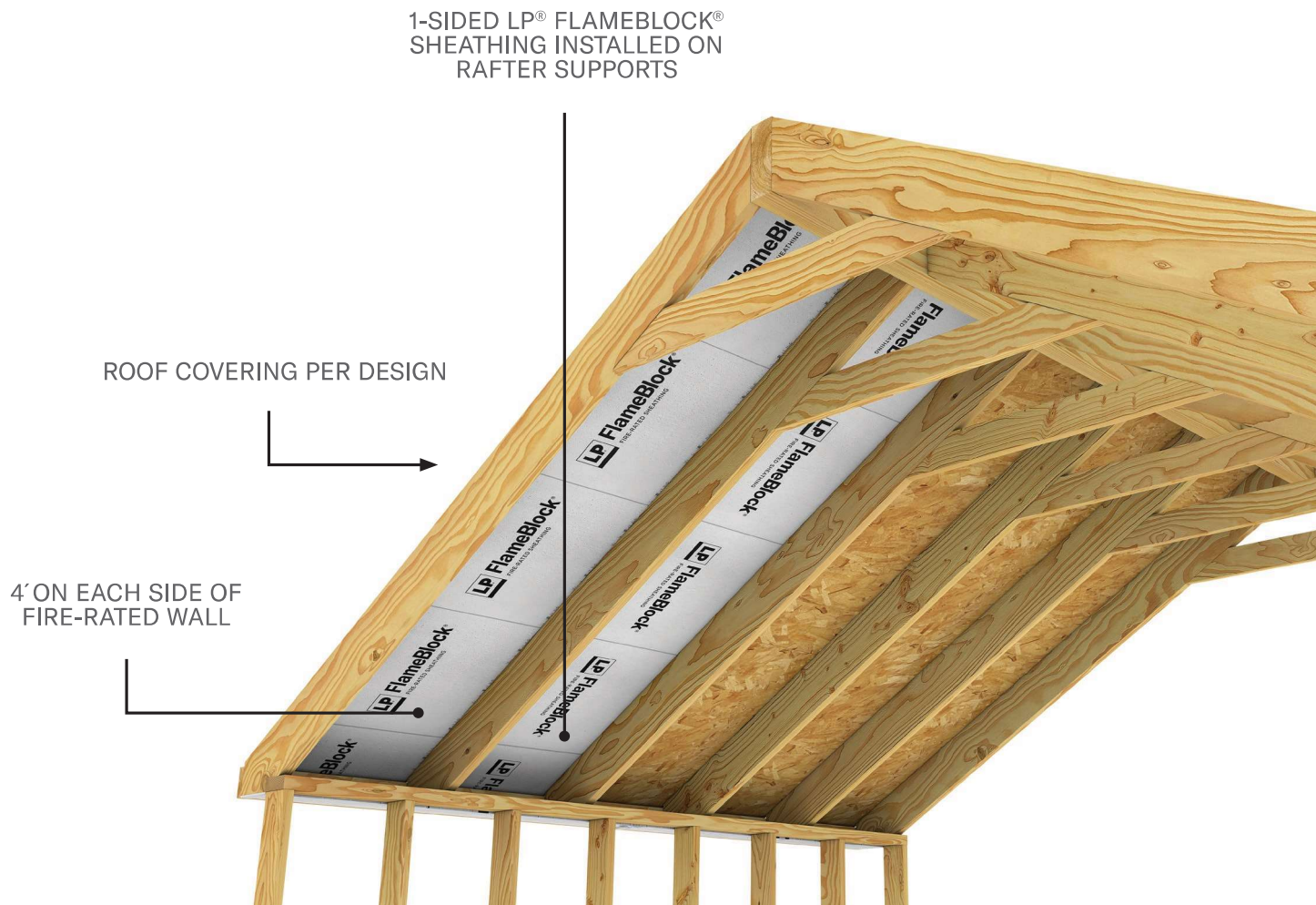
Nominal panel thickness and weights of LP FlameBlock Fire-Rated Sheathing

PERFORMANCE CATEGORY		NOMINAL THICKNESS (IN.)		NOMINAL PANEL WEIGHT (PSF)	
1-Sided	2-Sided	1-Sided	2-Sided	1-Sided	2-Sided
7/16	7/16*	0.44	0.50	1.9	2.5
15/32	15/32*	0.50	0.56	2.1	2.7
15/32	15/32	0.53	0.59	2.2	2.8
19/32	19/32	0.66	0.72	2.6	3.2
23/32	23/32	0.78	0.84	3.0	3.6
1-1/8	1-1/8	1.19	1.25	4.3	5.0

*Structural I equivalence, reference Section 5.4 and Table 1 ICC-ES ESR-1365

ROOF DECK APPLICATIONS

- Roof sheathing for 4 feet on both sides of a fire wall (ESR-1365 Section 4.2a)
- 2021 IRC Section 302.2.4 Exception
- 2021 IBC Section 706.6, Exception 4.3
- For construction Type III, IV, V and townhouses—1-Sided LP FlameBlock Panel with coated side facing the interior
- Available in range of categories, including 7/16" to provide consistency with 7/16" OSB where applicable
- Roof sheathing in roof deck applications for construction Type I and II (ESR-1365 Section 4.2b)—2-Sided LP FlameBlock panels required



SINGLE-FAMILY

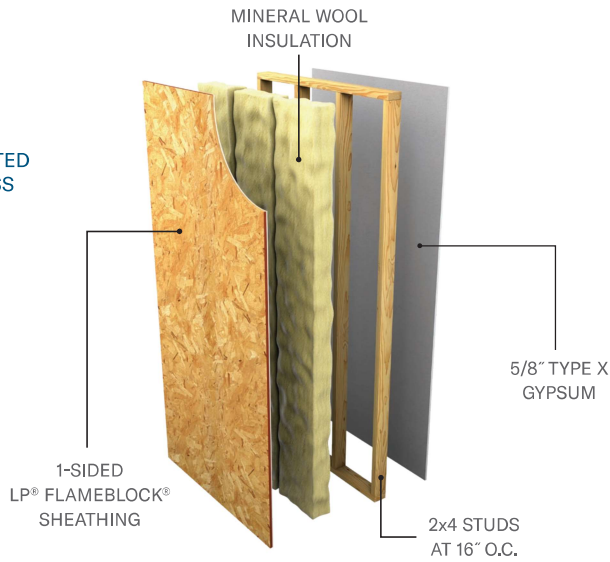
LP® FlameBlock® 1-Hour Fire Resistance Rated Wall Assemblies for single-family construction with fire separation distances (FSD) less than 5'-0". LP FlameBlock assemblies for 1-hour fire resistance have resistance from either side and can eliminate the use of exterior gypsum. Maintains consistent wall thickness with unrated walls.

See pages [17-22](#) for additional assemblies. Reference assembly listings for additional information.

V340 REPLACES PREVIOUS INTERTEK ASSEMBLY DESIGN NUMBER LPB/WPPS 60-01

V340

1-HOUR EITHER SIDE
LOAD RESTRICTED TO 40%
STUD CAPACITY, CALCULATED
ASSUMING A SLENDERNESS
RATIO OF $l/d=33$



U348

1-HOUR EITHER SIDE



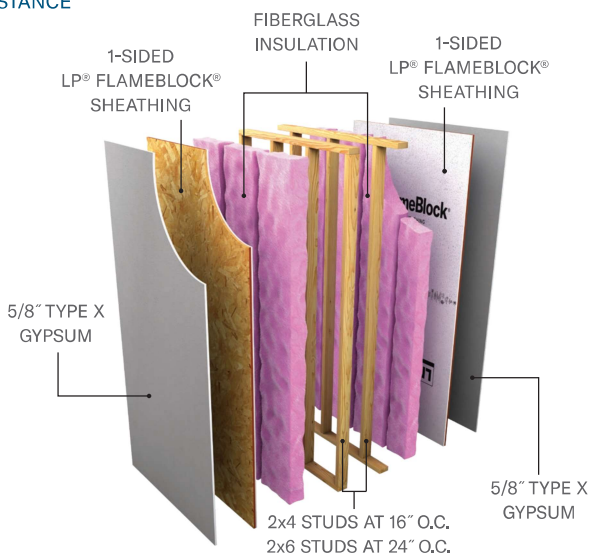
TOWNHOUSE SEPARATIONS

COMMON 2-HOUR FIRE-RESISTANCE RATED WALL ASSEMBLY: IRC SECTION R302.2.2

U350 A

2-HOUR EITHER SIDE

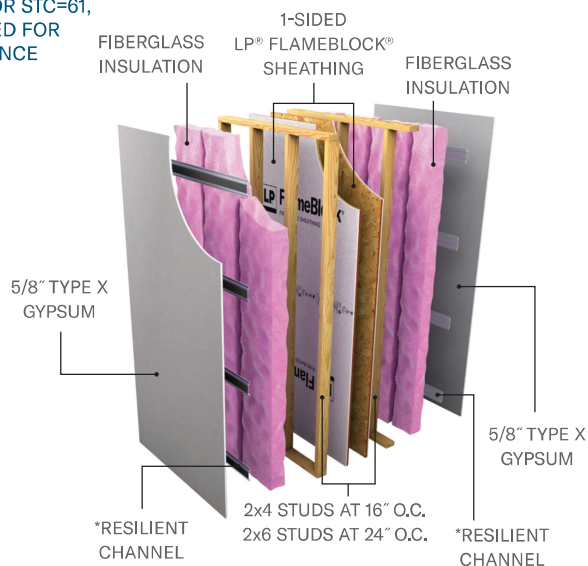
STAGGERED STUDS FOR STC=61, NOT REQUIRED FOR FIRE RESISTANCE



U350 B

2-HOUR EITHER SIDE

*STAGGERED STUDS AND RESILIENT CHANNEL REQUIRED FOR STC=61, NOT REQUIRED FOR FIRE RESISTANCE



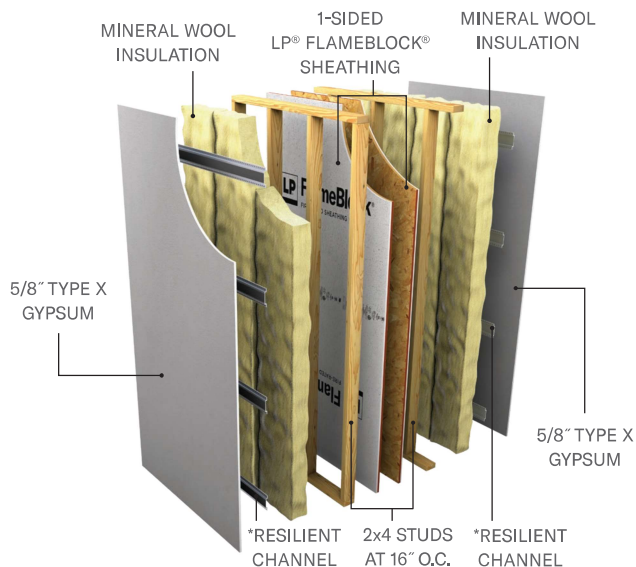
TWO 1-HOUR FIRE-RESISTANCE RATED WALL ASSEMBLIES: IRC SECTION R302.2.1 DOUBLE WALLS

V340

TWO 1-HOUR WALLS

LOAD RESTRICTED TO 40% STUD CAPACITY, CALCULATED ASSUMING A SLENDERNESS RATIO OF $l/d=33$

*STAGGERED STUDS AND RESILIENT CHANNEL REQUIRED FOR STC=61, NOT REQUIRED FOR FIRE RESISTANCE

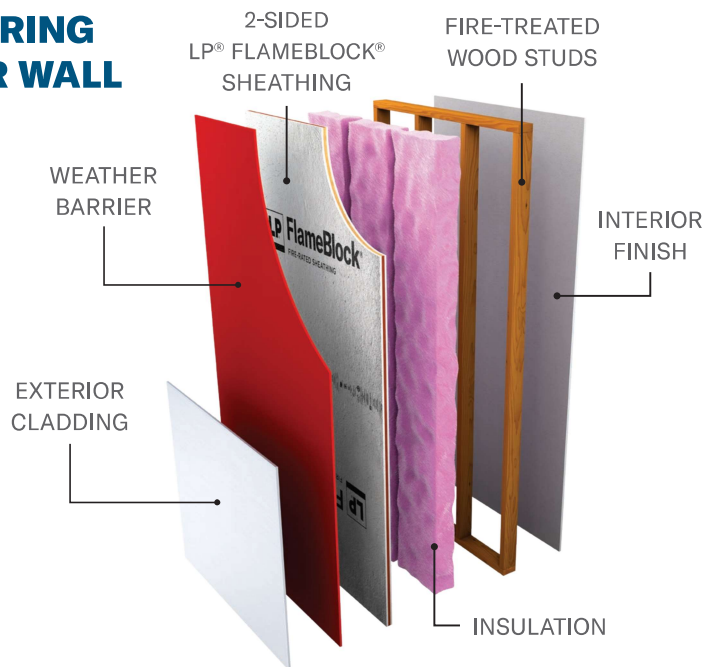


TYPE I & II CONSTRUCTION

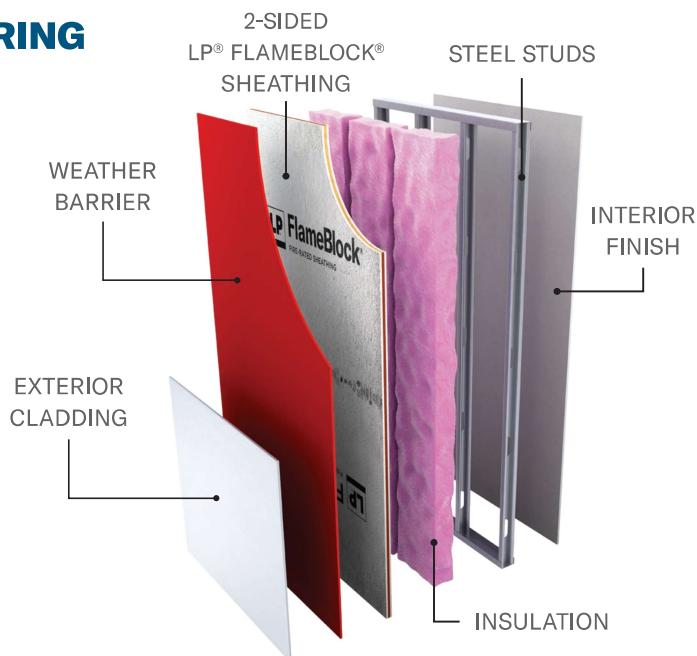
2-sided LP® FlameBlock® sheathing is required for exterior walls and roof deck applications in buildings of Type I & II construction.

Ideal for exterior claddings attached directly to a structural panel. Many water-resistant coatings have been evaluated and demonstrated chemical compatibility with LP FlameBlock sheathing. [Please see LP Technical note.](#)

TYPE I & II NON-BEARING EXTERIOR WALL



TYPE I & II NON-BEARING EXTERIOR WALL



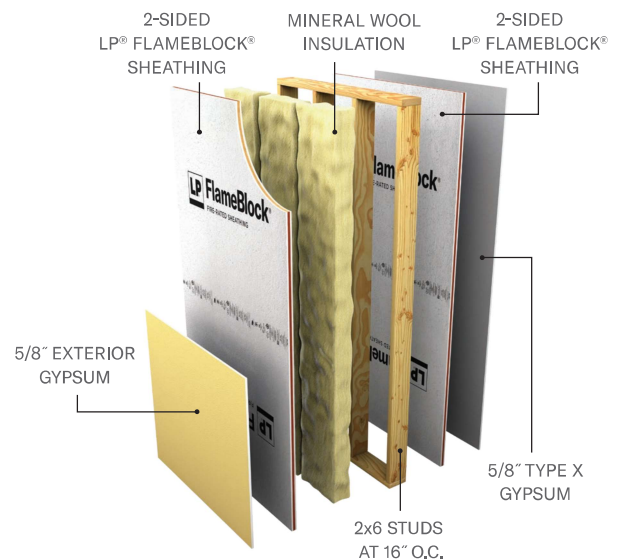
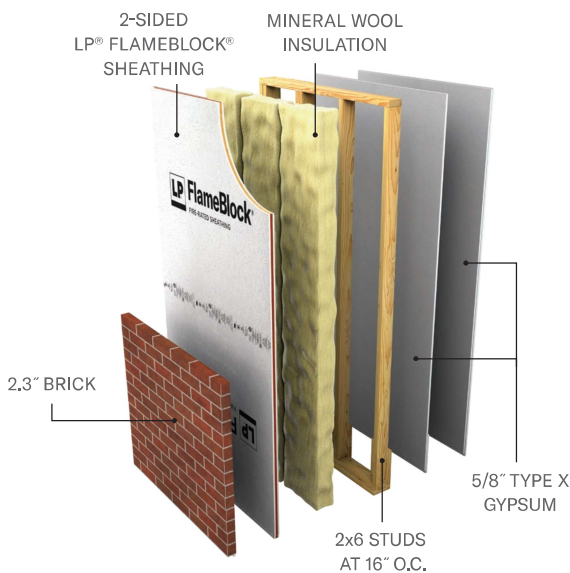
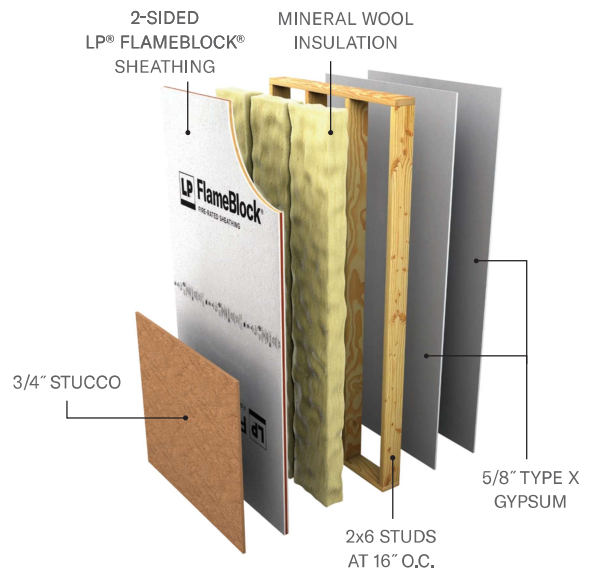
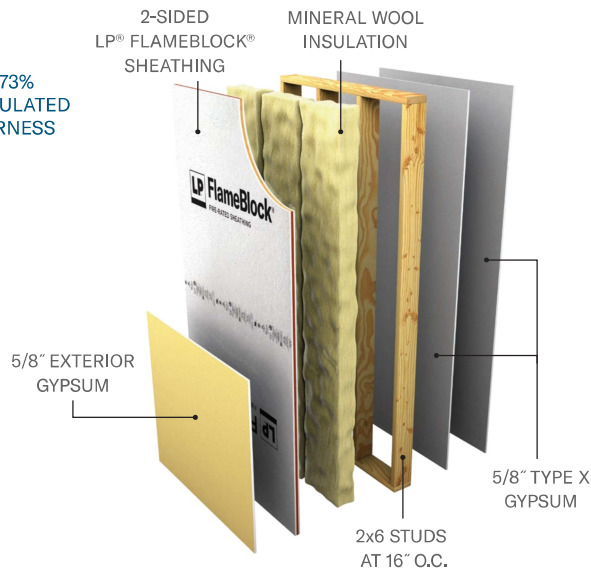
TYPE III CONSTRUCTION

2-sided LP® FlameBlock® sheathing and non-combustible or fire-retardant-treated wood studs are required for exterior walls in buildings of Type III construction. See pages 17-22 for other wood and metal stud assembly options not shown and assembly design listings for additional information.

V337

2-HOUR EITHER SIDE
LOAD RESTRICTED TO 73%
STUD CAPACITY, CALCULATED
ASSUMING A SLENDERNESS
RATIO OF $l/d=21$

Note: Base layer of interior gypsum may be replaced with 2-sided LP FlameBlock sheathing.



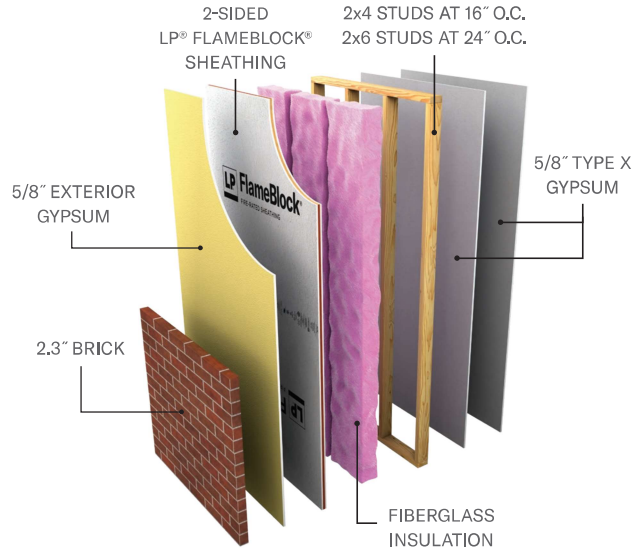
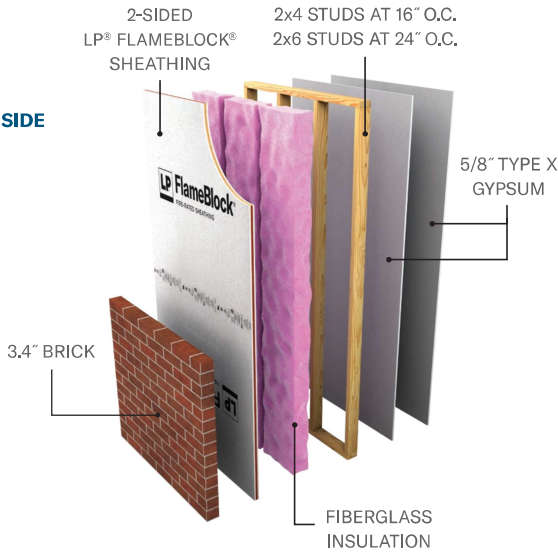
TYPE III CONSTRUCTION

2-sided LP® FlameBlock® sheathing and non-combustible or fire-retardant-treated wood studs are required for exterior walls in buildings of Type III construction. See pages 17-22 for other wood and metal stud assembly options not shown and assembly design listings for additional information.

2-HOUR EITHER SIDE

U349

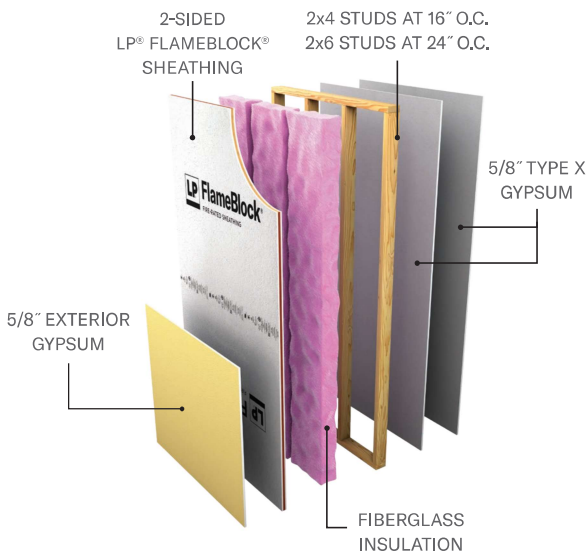
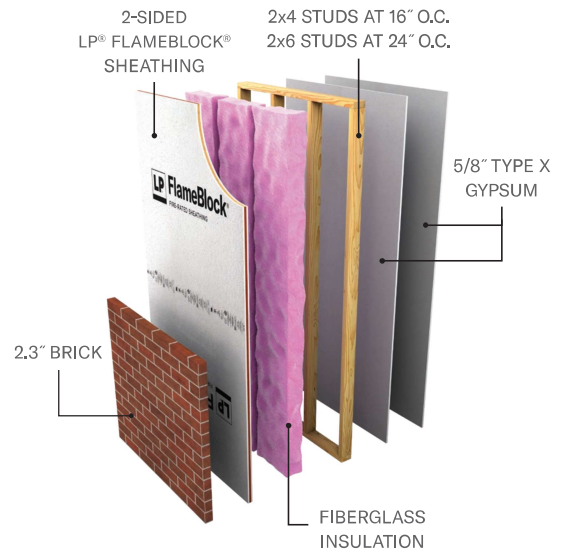
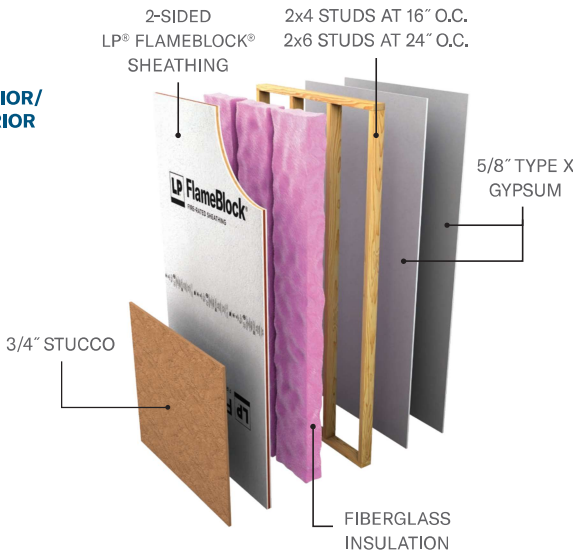
2-HOUR EITHER SIDE



2-HOUR INTERIOR, 1-HOUR EXTERIOR

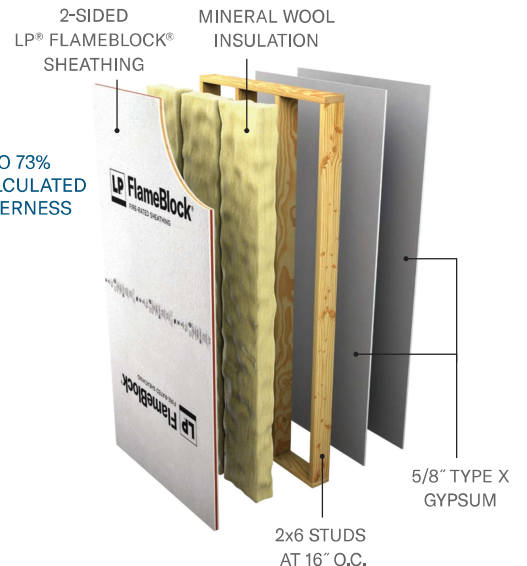
U349

2-HOUR INTERIOR/ 1-HOUR EXTERIOR



V337

**2-HOUR INTERIOR
1-HOUR EXTERIOR**
 LOAD RESTRICTED TO 73%
 STUD CAPACITY, CALCULATED
 ASSUMING A SLENDERNESS
 RATIO OF $l/d=21$



TYPE III CONSTRUCTION

2-sided LP® FlameBlock® sheathing and non-combustible or fire-retardant-treated wood studs are required for exterior walls in buildings of Type III construction. See pages 17-22 for other wood and metal stud assembly design listings for additional information.

2-HOUR INTERIOR ONLY

U349

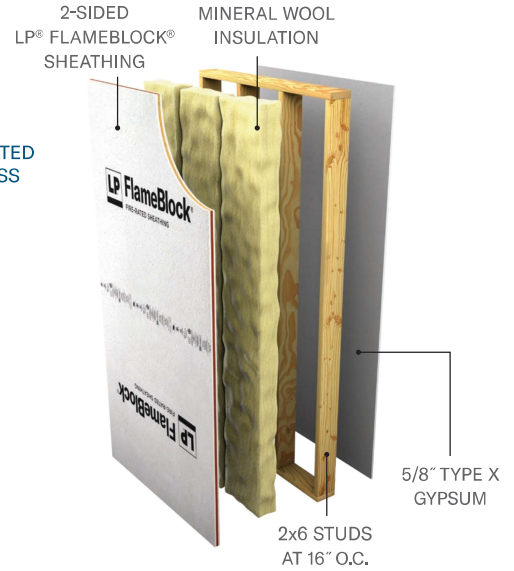
2-HOUR INTERIOR RESISTANCE ONLY



1-HOUR EITHER SIDE

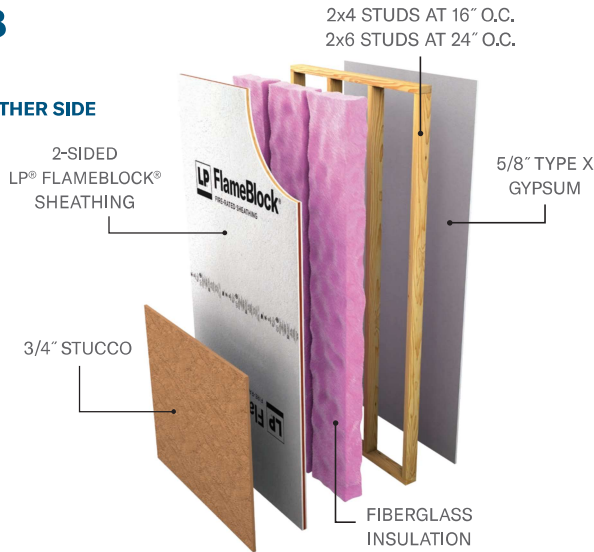
V337

1-HOUR EITHER SIDE
 LOAD RESTRICTED TO 73% STUD CAPACITY, CALCULATED ASSUMING A SLENDERNESS RATIO OF $l/d=21$



U348

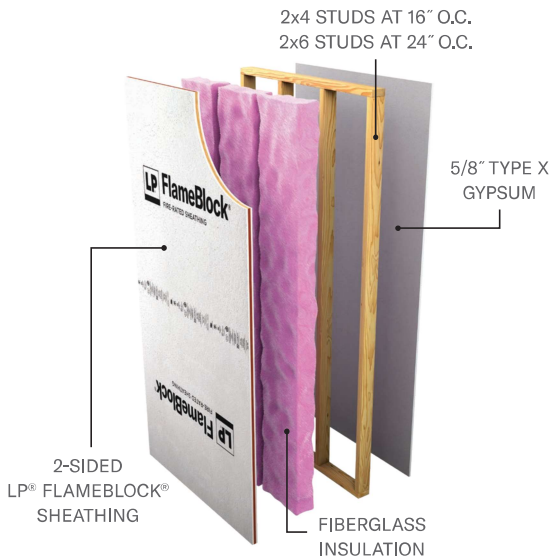
1-HOUR EITHER SIDE



1-HOUR INTERIOR ONLY

U348

1-HOUR INTERIOR RESISTANCE ONLY



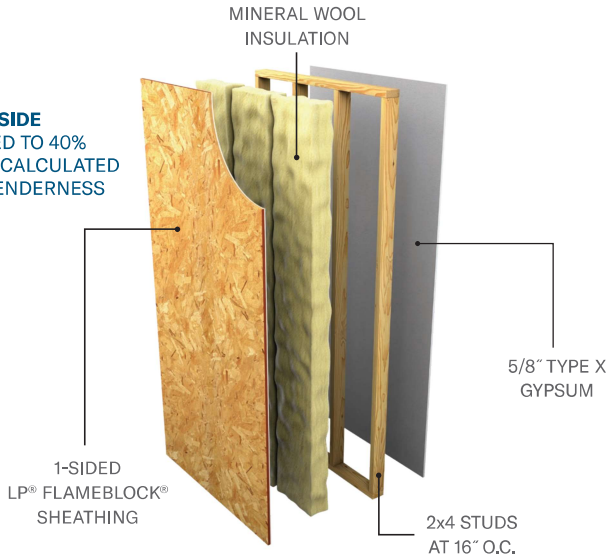
TYPE V CONSTRUCTION

See pages 17-22 for other wood and metal stud assembly options not shown and assembly design listings for additional information.

1-HOUR EITHER SIDE

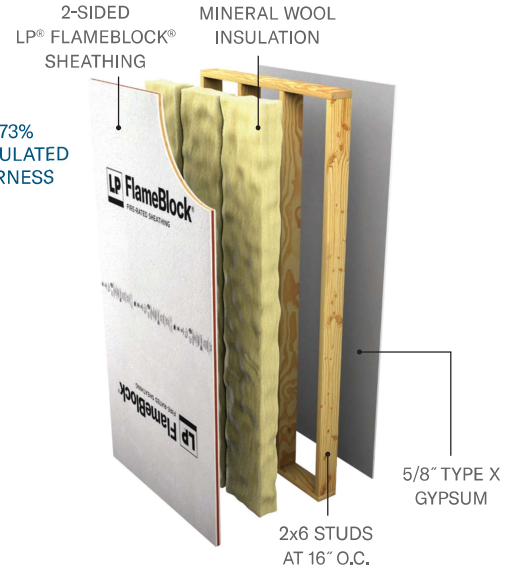
V340

1-HOUR EITHER SIDE
LOAD RESTRICTED TO 40%
STUD CAPACITY, CALCULATED
ASSUMING A SLENDERNESS
RATIO OF $l/d=33$



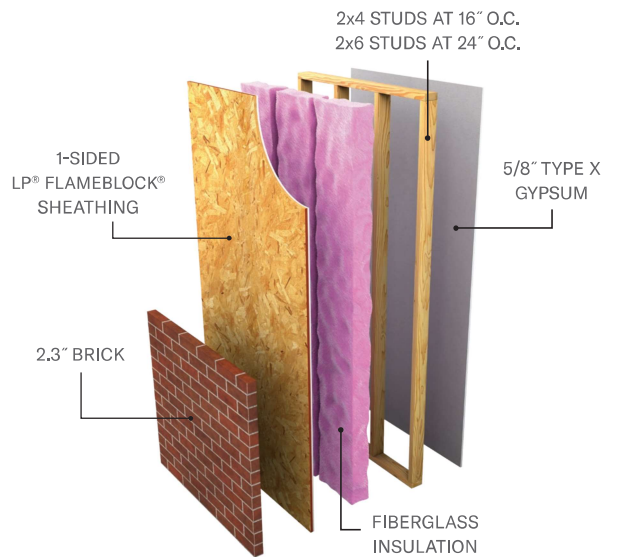
V337

1-HOUR EITHER SIDE
LOAD RESTRICTED TO 73%
STUD CAPACITY, CALCULATED
ASSUMING A SLENDERNESS
RATIO OF $l/d=21$



U348

1-HOUR EITHER SIDE



1-HOUR INTERIOR ONLY

U348

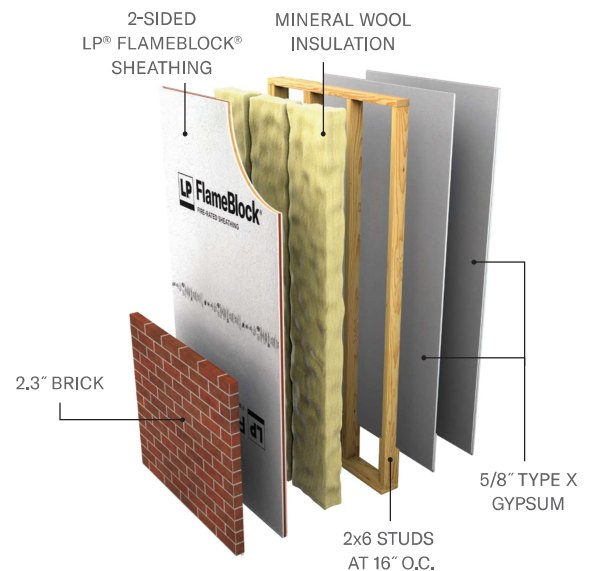
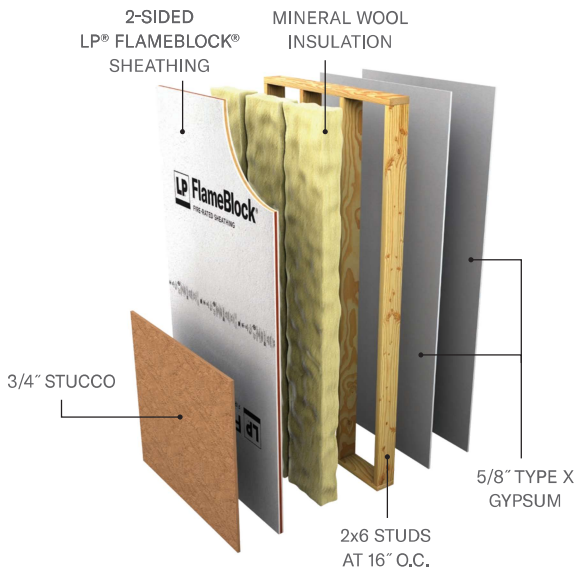
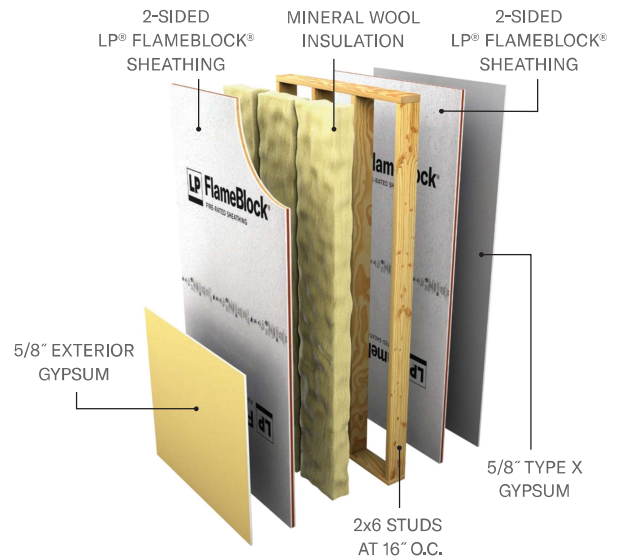
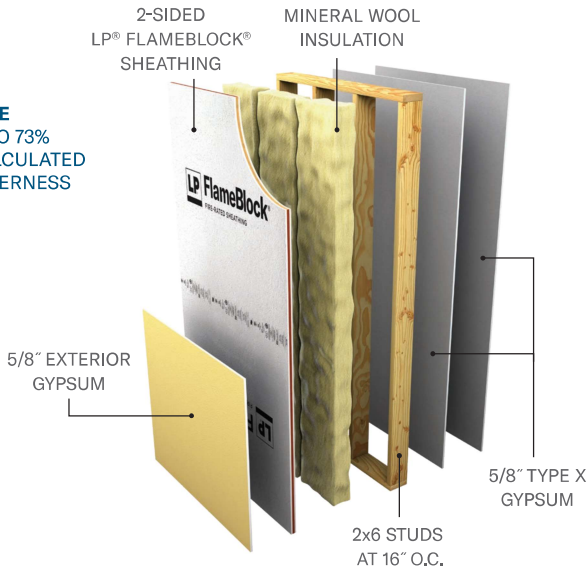
1-HOUR INTERIOR RESISTANCE ONLY



2-HOUR EITHER SIDE

V337

2-HOUR EITHER SIDE
LOAD RESTRICTED TO 73%
STUD CAPACITY, CALCULATED
ASSUMING A SLENDERNESS
RATIO OF $l/d=21$



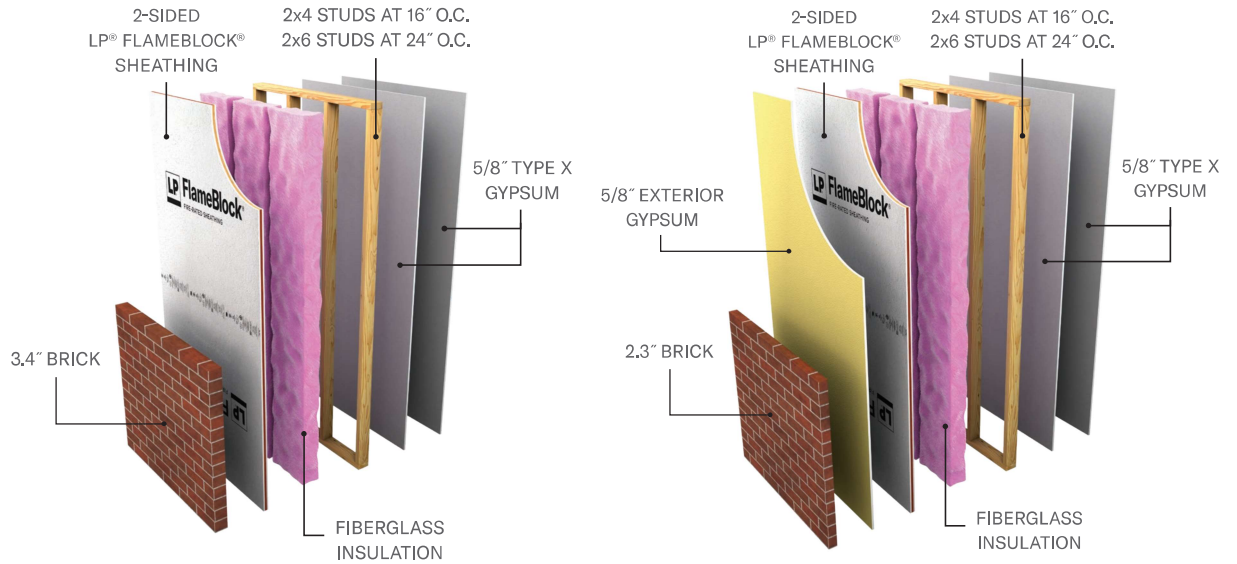
TYPE V CONSTRUCTION

See pages 17-22 for other wood and metal stud assembly options not shown and assembly design listings for additional information.

2-HOUR EITHER SIDE

U349

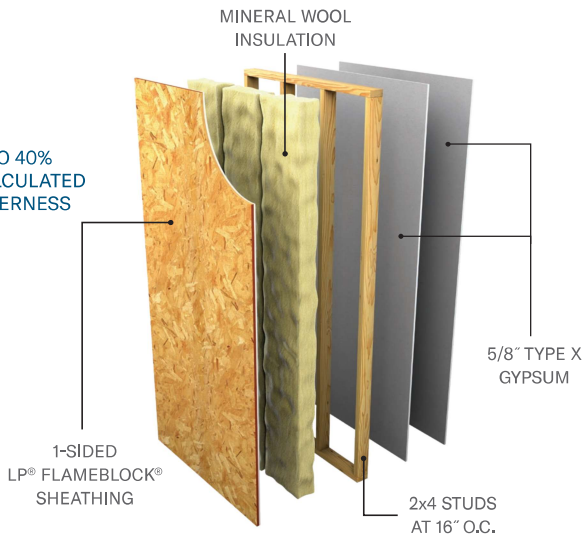
2-HOUR EITHER SIDE



2-HOUR INTERIOR, 1-HOUR EXTERIOR

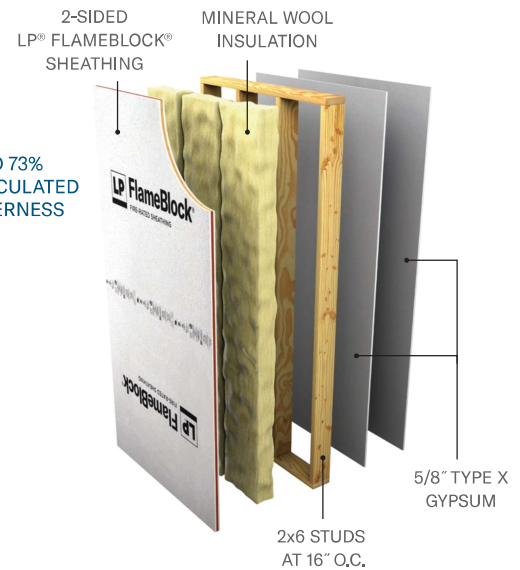
V340

**2-HOUR INTERIOR
1-HOUR EXTERIOR**
LOAD RESTRICTED TO 40%
STUD CAPACITY, CALCULATED
ASSUMING A SLENDERNESS
RATIO OF $l/d=33$



V337

**2-HOUR INTERIOR
1-HOUR EXTERIOR**
LOAD RESTRICTED TO 73%
STUD CAPACITY, CALCULATED
ASSUMING A SLENDERNESS
RATIO OF $l/d=21$



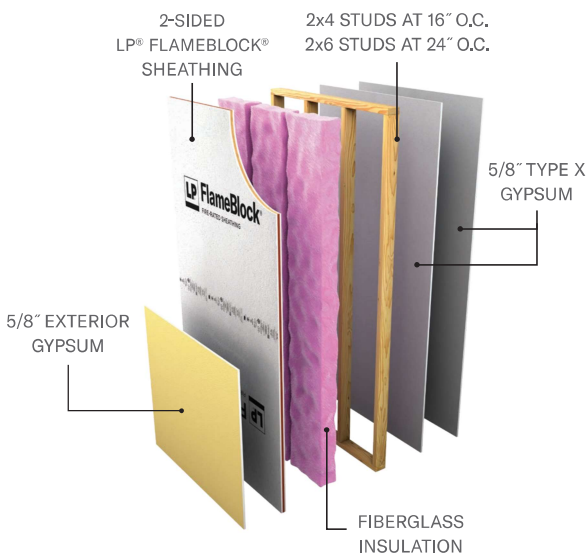
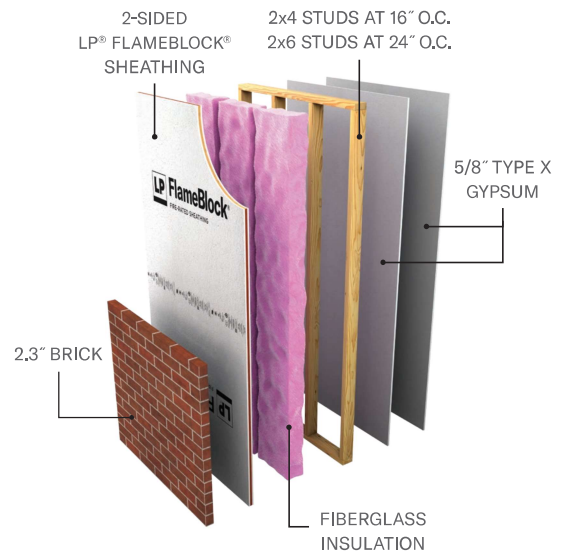
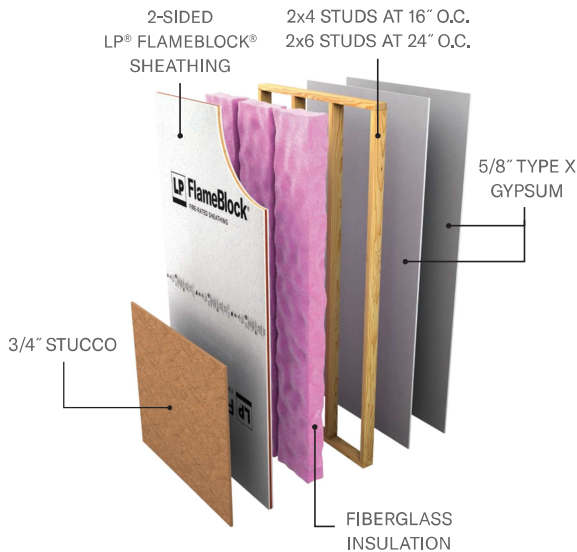
TYPE V CONSTRUCTION

See pages 17-22 for other wood and metal stud assembly options not shown and assembly design listings for additional information.

2-HOUR INTERIOR, 1-HOUR EXTERIOR

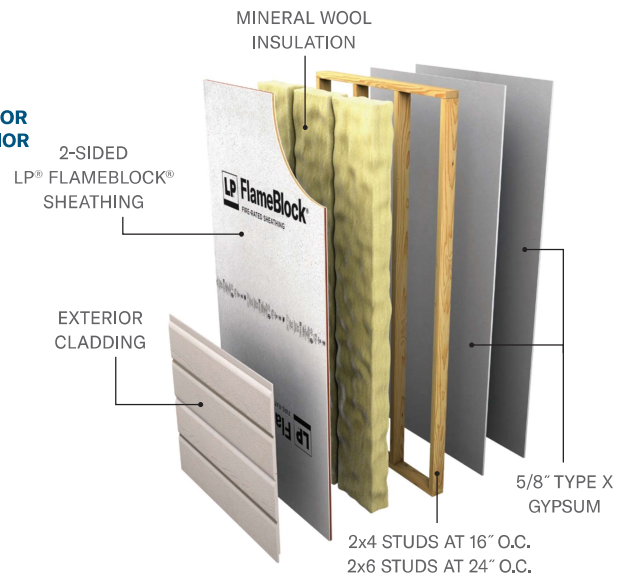
U349

2-HOUR INTERIOR
1-HOUR EXTERIOR



W408

2-HOUR INTERIOR
1-HOUR EXTERIOR



2-HOUR INTERIOR ONLY

U349

2-HOUR INTERIOR
RESISTANCE ONLY



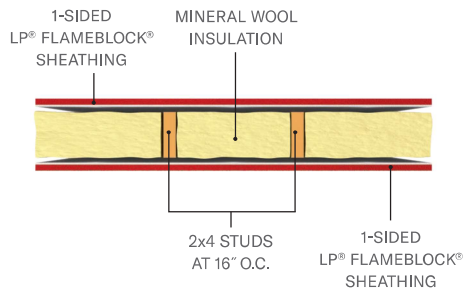
ASSEMBLIES

WOOD STUDS

45-MINUTE EITHER SIDE

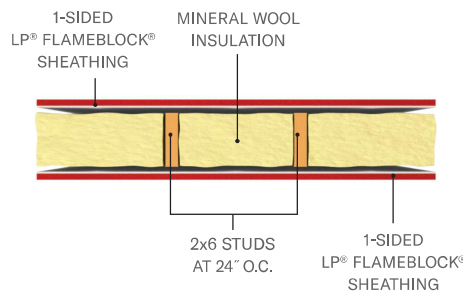
V338

45-MINUTE EITHER SIDE
LOAD RESTRICTED TO 51.2%
STUD CAPACITY, CALCULATED
ASSUMING A SLENDERNESS
RATIO OF $l/d=33$



V339

45-MINUTE EITHER SIDE
LOAD RESTRICTED TO 60.6%
STUD CAPACITY, CALCULATED
ASSUMING A SLENDERNESS
RATIO OF $l/d=21$

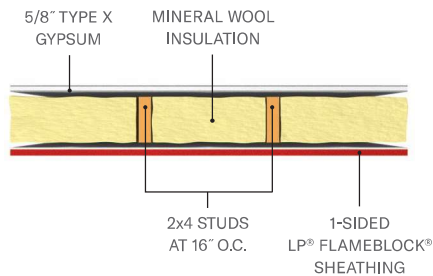


1-HOUR EITHER SIDE

V340 REPLACES PREVIOUS INTERTEK ASSEMBLY DESIGN NUMBER LPB/WPPS 60-01

V340

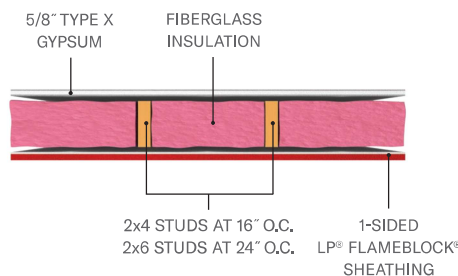
1-HOUR EITHER SIDE
LOAD RESTRICTED TO 40%
STUD CAPACITY, CALCULATED
ASSUMING A SLENDERNESS
RATIO OF $l/d=33$



1-HOUR INTERIOR ONLY

U348

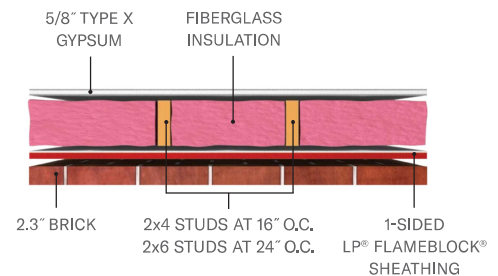
**1-HOUR INTERIOR
RESISTANCE ONLY**



1-HOUR EITHER SIDE

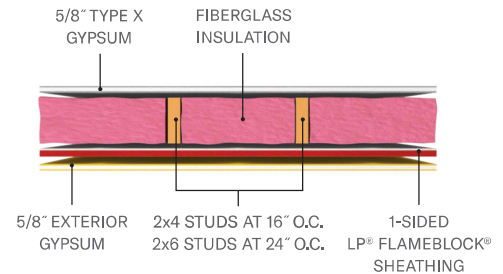
U348

1-HOUR EITHER SIDE



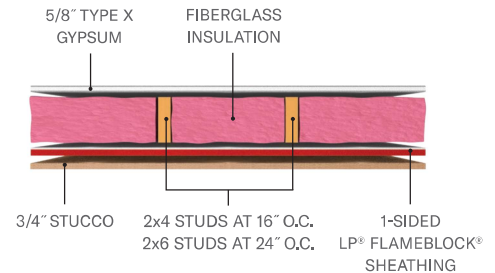
U348

1-HOUR EITHER SIDE



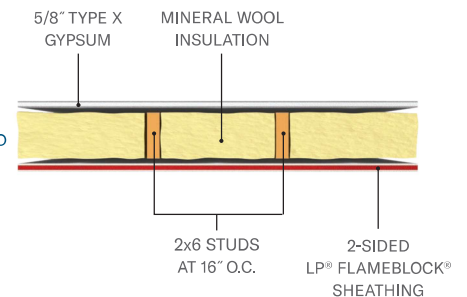
U348

1-HOUR EITHER SIDE



V337

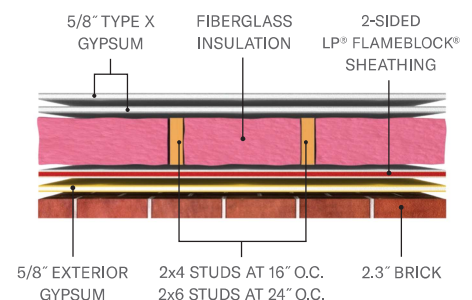
1-HOUR EITHER SIDE
LOAD RESTRICTED TO 73%
STUD CAPACITY, CALCULATED
ASSUMING A SLENDERNESS
RATIO OF $l/d=21$



2-HOUR EITHER SIDE

U349

2-HOUR EITHER SIDE

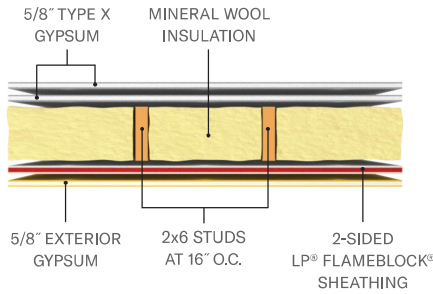


- Reference the UL listings for alternate configurations and additional information.
- The use of 2-sided LP® FlameBlock® sheathing or fire-retardant-treated wood framing may be required by the building Construction Type. Reference section 4.2 in ICC-ES ESR 1365 for additional information not shown.

2-HOUR EITHER SIDE

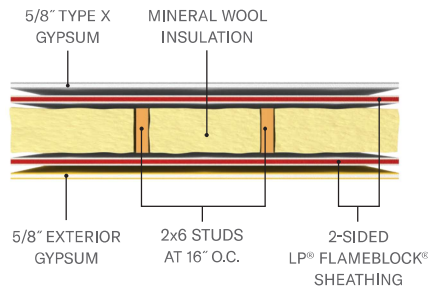
V337

2-HOUR EITHER SIDE
LOAD RESTRICTED TO 73%
STUD CAPACITY, CALCULATED
ASSUMING A SLENDERNESS
RATIO OF $l/d=21$



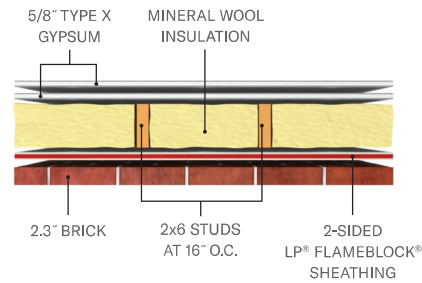
V337

2-HOUR EITHER SIDE
LOAD RESTRICTED TO 73%
STUD CAPACITY, CALCULATED
ASSUMING A SLENDERNESS
RATIO OF $l/d=21$



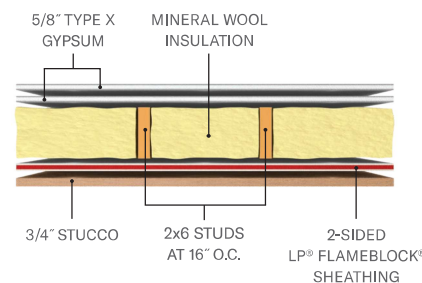
V337

2-HOUR EITHER SIDE
LOAD RESTRICTED TO 73%
STUD CAPACITY, CALCULATED
ASSUMING A SLENDERNESS
RATIO OF $l/d=21$



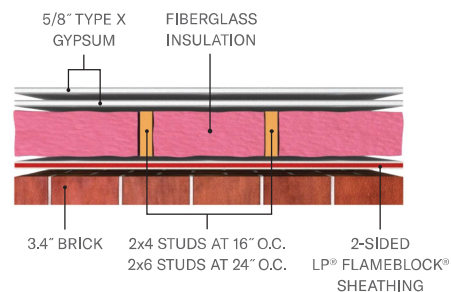
V337

2-HOUR EITHER SIDE
LOAD RESTRICTED TO 73%
STUD CAPACITY, CALCULATED
ASSUMING A SLENDERNESS
RATIO OF $l/d=21$



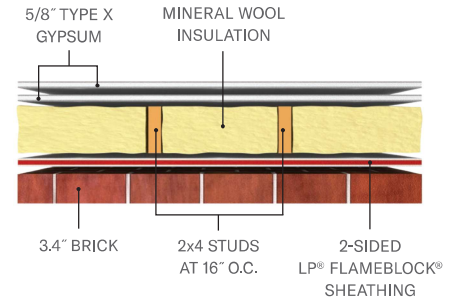
U349

2-HOUR EITHER SIDE



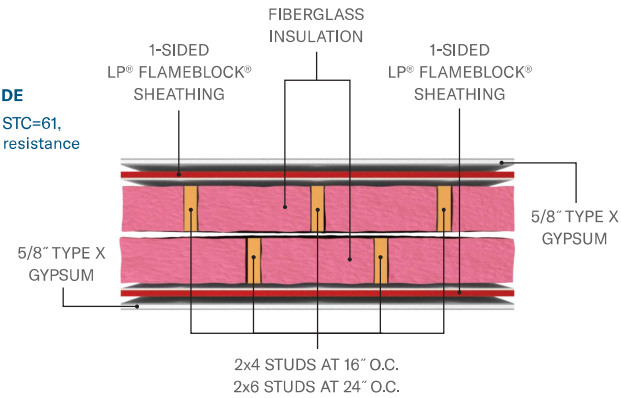
V340

2-HOUR EITHER SIDE
LOAD RESTRICTED TO 40%
STUD CAPACITY, CALCULATED
ASSUMING A SLENDERNESS
RATIO OF $l/d=33$



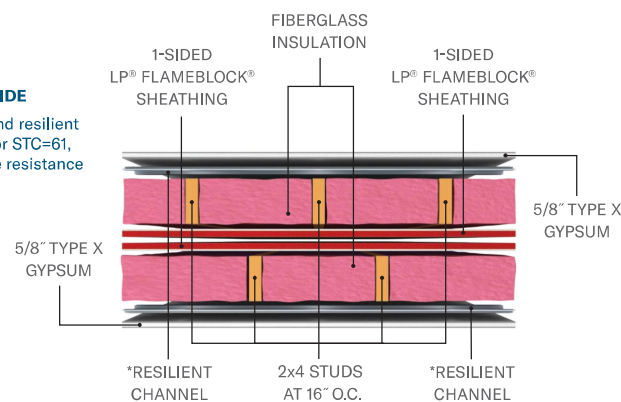
U350 A

2-HOUR EITHER SIDE
Staggered studs for $STC=61$,
not required for fire resistance



U350 B

2-HOUR EITHER SIDE
*Staggered studs and resilient
channel required for $STC=61$,
not required for fire resistance



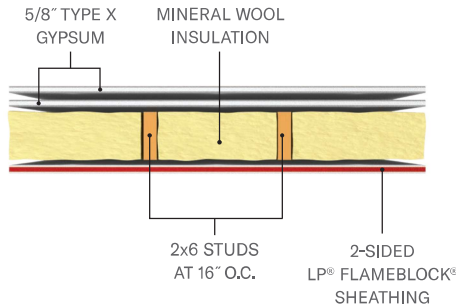
ASSEMBLIES

WOOD STUDS

2-HOUR INTERIOR, 1-HOUR EXTERIOR

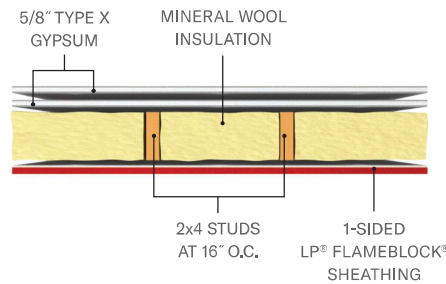
V337

**2-HOUR INTERIOR
1-HOUR EXTERIOR**
LOAD RESTRICTED TO
73% STUD CAPACITY,
CALCULATED ASSUMING
A SLENDERNESS RATIO
OF $l/d=21$



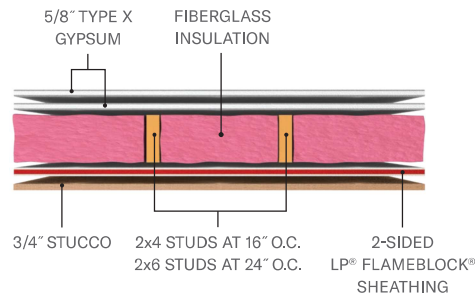
V340

**2-HOUR INTERIOR
1-HOUR EXTERIOR**
LOAD RESTRICTED TO
40% STUD CAPACITY,
CALCULATED ASSUMING
A SLENDERNESS RATIO
OF $l/d=33$



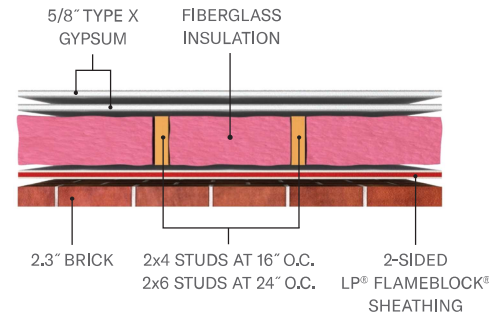
U349

**2-HOUR INTERIOR
1-HOUR EXTERIOR**



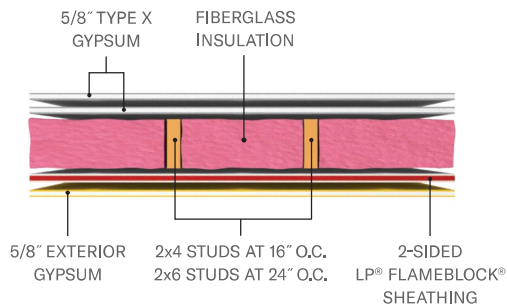
U349

**2-HOUR INTERIOR
1-HOUR EXTERIOR**



U349

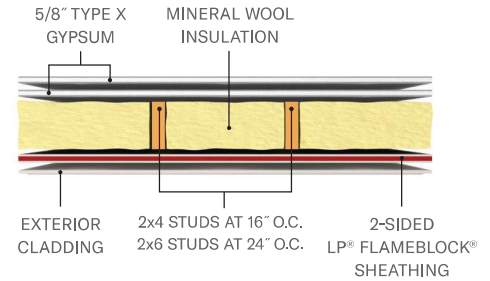
**2-HOUR INTERIOR
1-HOUR EXTERIOR**



2-HOUR INTERIOR, 1-HOUR EXTERIOR

W408

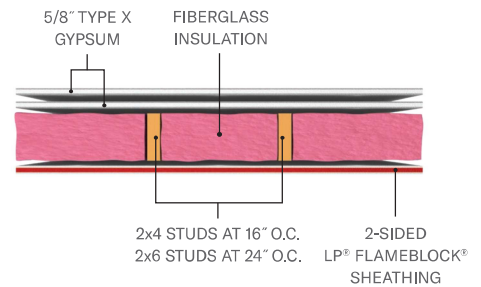
**2-HOUR INTERIOR
1-HOUR EXTERIOR**



2-HOUR INTERIOR ONLY

U349

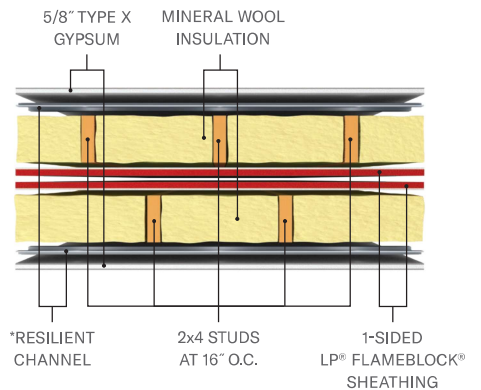
**2-HOUR INTERIOR
RESISTANCE ONLY**



TWO 1-HOUR WALLS

V340

TWO 1-HOUR WALLS
LOAD RESTRICTED TO
40% STUD CAPACITY,
CALCULATED ASSUMING
A SLENDERNESS RATIO
OF $l/d=33$



- Reference the UL listings for alternate configurations and additional information.
- The use of 2-sided LP® FlameBlock® sheathing or fire-retardant-treated wood framing may be required by the building Construction Type. Reference section 4.2 in ICC-ES ESR 1365 for additional information not shown.

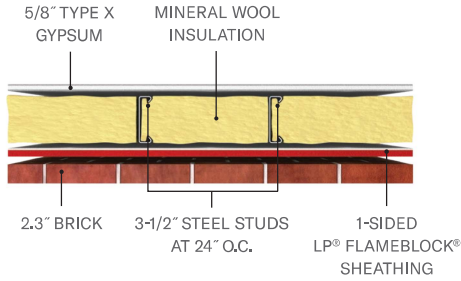
ASSEMBLIES

STEEL STUDS

1-HOUR EITHER SIDE

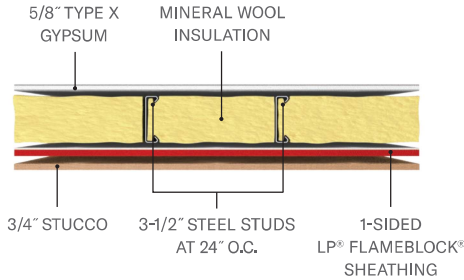
U348

1-HOUR EITHER SIDE



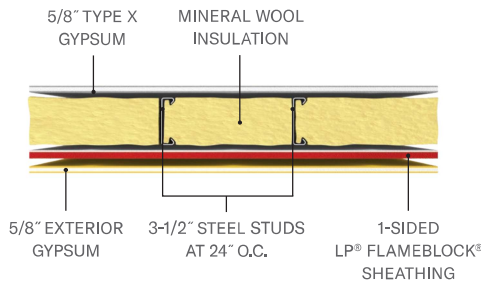
U348

1-HOUR EITHER SIDE



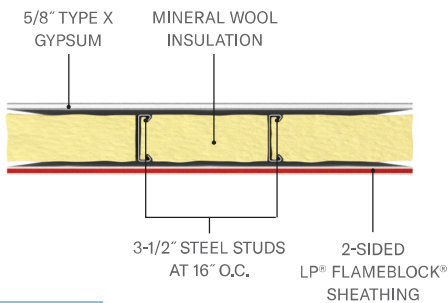
U348

1-HOUR EITHER SIDE



V337

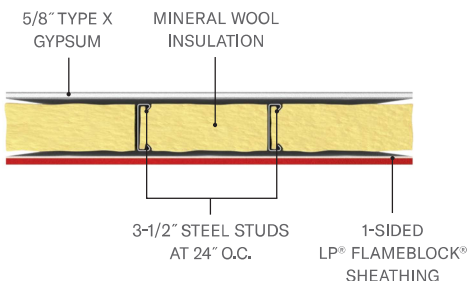
1-HOUR EITHER SIDE
LOAD RESTRICTED TO 73% STUD CAPACITY, CALCULATED ASSUMING A SLENDERNESS RATIO OF $I/d=21$



1-HOUR INTERIOR ONLY

U348

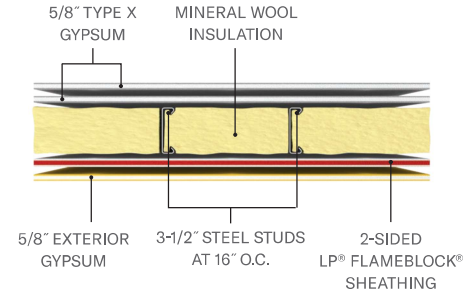
1-HOUR INTERIOR RESISTANCE ONLY



2-HOUR EITHER SIDE

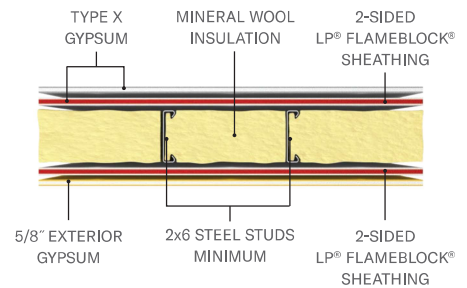
V337

2-HOUR EITHER SIDE
LOAD RESTRICTED TO 73% STUD CAPACITY, CALCULATED ASSUMING A SLENDERNESS RATIO OF $I/d=21$



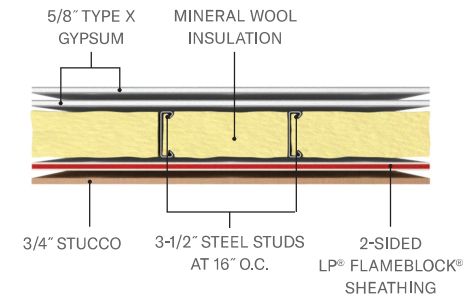
V337

2-HOUR EITHER SIDE
LOAD RESTRICTED TO 73% STUD CAPACITY, CALCULATED ASSUMING A SLENDERNESS RATIO OF $I/d=21$



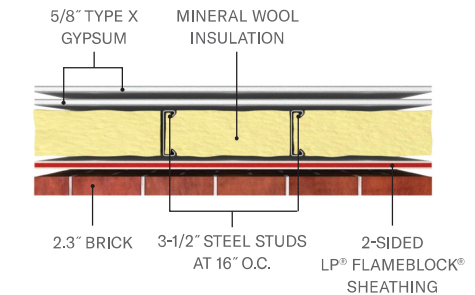
V337

2-HOUR EITHER SIDE
LOAD RESTRICTED TO 73% STUD CAPACITY, CALCULATED ASSUMING A SLENDERNESS RATIO OF $I/d=21$



V337

2-HOUR EITHER SIDE
LOAD RESTRICTED TO 73% STUD CAPACITY, CALCULATED ASSUMING A SLENDERNESS RATIO OF $I/d=21$

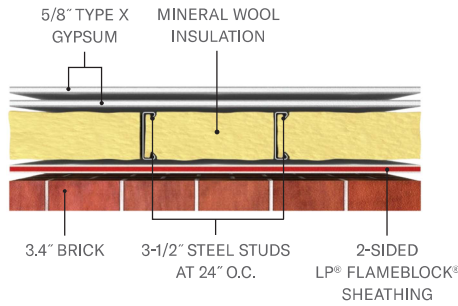


- Reference the UL listings for alternate configurations and additional information.
- The use of 2-sided LP® FlameBlock® sheathing may be required by the building Construction Type. Reference section 4.2 in ICC-ES ESR 1365 for additional information not shown.

2-HOUR EITHER SIDE

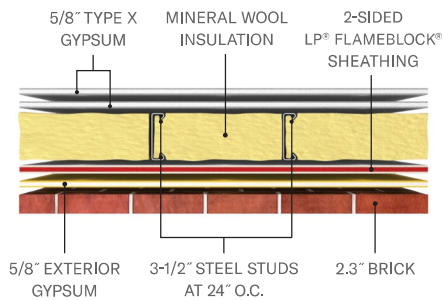
U349

2-HOUR EITHER SIDE



U349

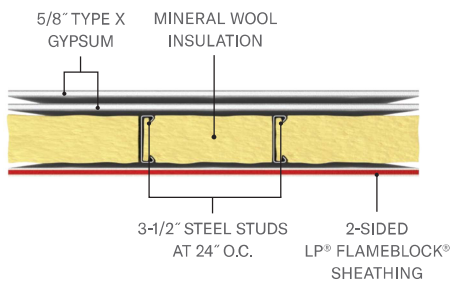
2-HOUR EITHER SIDE



2-HOUR INTERIOR ONLY

U349

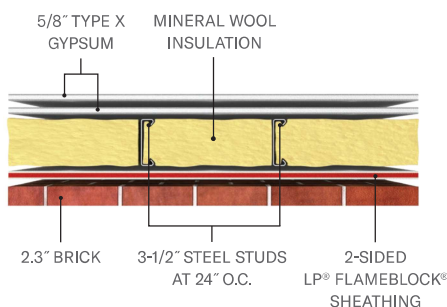
2-HOUR INTERIOR RESISTANCE ONLY



2-HOUR INTERIOR, 1-HOUR EXTERIOR

U349

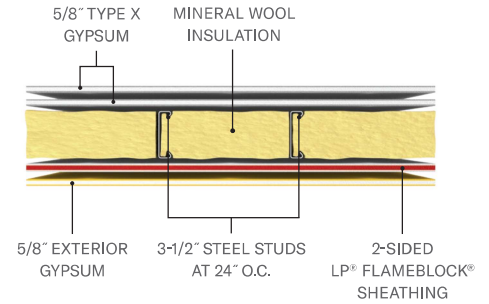
2-HOUR INTERIOR 1-HOUR EXTERIOR



2-HOUR INTERIOR, 1-HOUR EXTERIOR

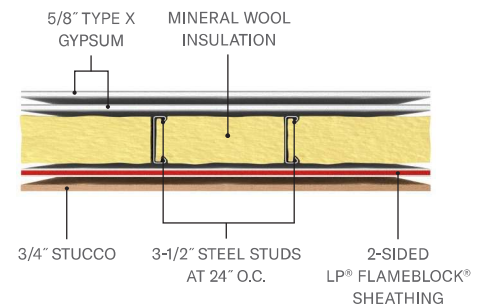
U349

2-HOUR INTERIOR 1-HOUR EXTERIOR



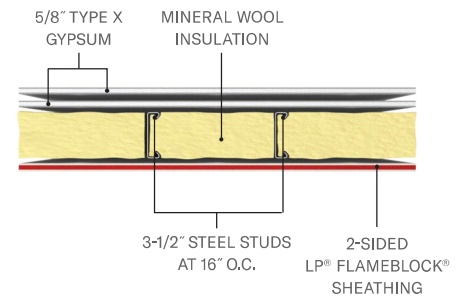
U349

2-HOUR INTERIOR 1-HOUR EXTERIOR



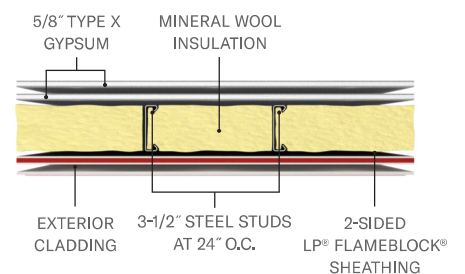
V337

2-HOUR INTERIOR 1-HOUR EXTERIOR
LOAD RESTRICTED TO 73% STUD CAPACITY, CALCULATED ASSUMING A SLENDERNESS RATIO OF $I/d=21$



W408

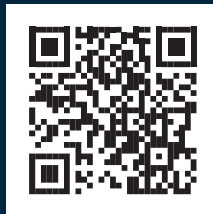
2-HOUR INTERIOR 1-HOUR EXTERIOR





Find all LP[®] FlameBlock[®] product literature at

LPCORP.COM/FLAMEBLOCK



⚠ WARNING: Drilling, sawing, sanding or machining wood products can expose you to wood dust, a substance known to the State of California to cause cancer. Avoid inhaling wood dust or use a dust mask or other safeguards for personal protection. For more information, go to www.P65Warnings.ca.gov/wood.

© 2023 Louisiana-Pacific Corporation. All rights reserved. APA is a registered trademark of APA – The Engineered Wood Association. Intertek is a registered trademark of Intertek Group, PLC. UL is a registered trademark of UL LLC. ICC-ES is a registered trademark of ICC Evaluation Service, LLC. All other trademarks are owned by Louisiana-Pacific Corporation. LPFB0165 1/23